



# Path-O-Wrap<sup>®</sup>

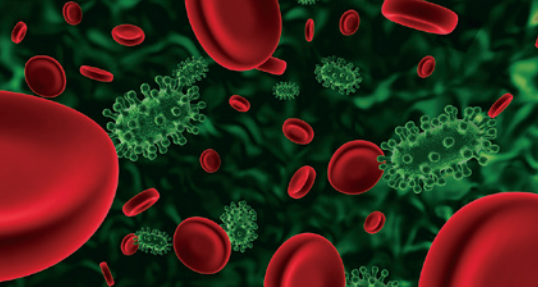


*"Protect Your Patient.  
Protect Yourself."*



## Innovation In Protection From Pathogens





## The Problem

Hospital mattresses, ambulance gurney mattresses, and spinal immobilization backboards are considered high-touch surfaces. These surfaces are considered potential reservoirs of harmful and infectious organisms, and contact with a contaminated mattress can easily facilitate the transmission of such organisms via:

- Wear and tear from routine use, transfer, and transport of patients
- Accidental damage and inappropriate clinical procedures
- Cleaning with incompatible cleaning products and disinfectants
- Contamination from potentially harmful blood-borne pathogens

According to researchers, “U.S. Healthcare providers are putting patients at risk by not effectively managing the condition of mattresses. The impact of this mismanagement is significant.”

- Decreasing patient confidence
- Increasing healthcare-associated infections
- Increasing patient morbidity and mortality, and
- Increasing healthcare related costs

### The Need for Protection

Independent Studies have shown that gurney mattresses and backboards can become “**potential reservoirs of pathogenic organisms.**” One study examined 62 “clean hospital beds” and found 51 beds contaminated with *Staphylococcus*, *Bacillus*, and *Micrococcus* species, *Pseudomonas fluorescens*, *Streptococcus viridans*, *Stenotrophomonas maltophilia*, *Klebsiella* species, and *Rhizobium radiobacter*. Another study examining “clean and in-service” spinal immobilization backboards found all of the boards examined to be contaminated. This study found the boards contaminated with various pathogens including, G(-) and G(+) *Bacillus*; G(-) *Bacillus* (*Pseudomonas aeruginosa*); G(-) *Bacillus* (*A. Baumannii*); G(-) *Bacillus* (*Acinetobacter* sp); G(+) Cluster forming coccus; G(+) Coccus (*ND*); Fungus, Yeast, and G(+) (*Methicillin Resistant Staphylococcus aureus*).

### The Potential for Infection

The potential to spread infection is staggering. According to statistics from the American Hospital Association (AHA), the National Association of Emergency Medical Technicians (NREMT), the National Fire Protection Association (NFA), and IBIS World Industry Reports; there are approximately 5,723 registered hospitals in the United States, providing over 920,829 registered patient beds. Additionally, these reports indicate over **7,269,919 healthcare personnel work within our hospital, and pre-hospital systems, treating over 36,156,245 patients annually.** These numbers show the great potential to spread infections, or transmit harmful pathogens to both patients and healthcare providers.

### The Mandate for Cleaning

It is mandatory that all healthcare and EMS personnel keep equipment clean and sanitized. Unfortunately, standard cleaning techniques often fall short of adequately decontaminating surfaces. The United States Department of Labor, Occupational Safety and Health Administration (OSHA) regulation for Toxic and Hazardous Substances, number 1910.1030, describes in detail the need for protection and mandates that hospital workers and EMS professionals sanitize medical equipment. Section 1910.1030(d)(4)(ii) of this regulation states, “**All equipment and environmental and working surfaces shall be cleaned and decontaminated after contact with blood or other potentially infectious materials.**”

## The Solution

Path-O-Wrap® is an innovative product that protects healthcare professionals and patients from blood-borne pathogens and cross-contamination. Path-O-Wrap is a thin, clear polyethylene shield that adheres to the surface of hospital mattresses and gurney mattresses, and other devices to provide a sanitary barrier, thereby preventing patients, and healthcare professional's exposure to harmful pathogens.

### Path-O-Wrap® Benefits

- Quick to apply
- Easy to Dispose
- Prevents Blood and Viral penetration
- Helps to reduce the use of harsh chemical cleaners
- Helps to reduce the down time when decontaminating beds and mattresses
- Helps to reduce wear and tear on beds and mattresses
- An inexpensive healthcare solution

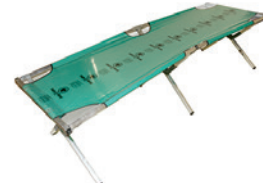
#### Hospital Gurney



#### EMS Gurney



#### DMAT Cot



[www.MedFire.com](http://www.MedFire.com)

(888) 560-1140